



Lexington-Fayette County Health Department Fiscal Year 2024 Annual Report

2024 LEXINGTON-FAYETTE COUNTY DIABETES EXPO



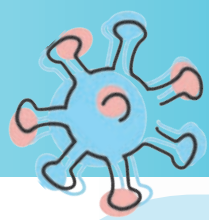
On April 27, the Lexington-Fayette County Diabetes Expo took place at the University of Kentucky Cooperative Extension.

The event brought together more than 20 vendors, offering valuable resources and expertise to a diverse group of attendees eager to learn, connect, and take control of their health.

With nearly 14% of Kentuckians living with diabetes and 34% facing prediabetes, the state ranks 8th in the nation for diabetes prevalence.

This made the Expo's information particularly impactful, as attendees had the opportunity to take part in cooking demonstrations, primary care and education services, vision screenings, expert Q&As, free vaccines, and much more.

The Expo was such a success that plans for a 2025 event are already underway. LFCHD's diabetes program team is excited to collaborate with community partners to make the next event even bigger and more impactful!

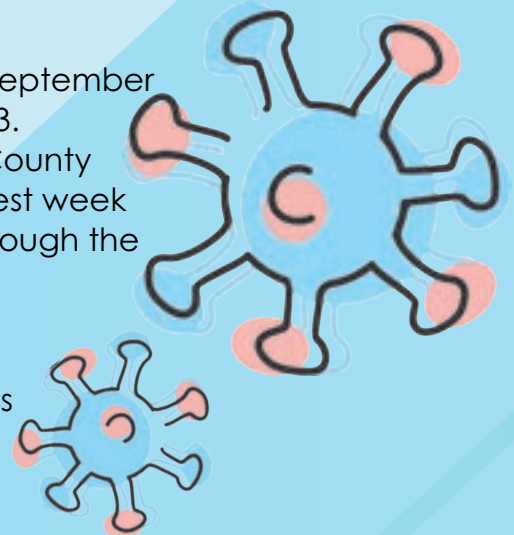


COVID-19 RESPONSE HIGHLIGHTS

The COVID-19 pandemic response was the overriding focus and driver of much of LFCHD's activities during FY 2024. As the community lead for public health, LFCHD provided expertise and guidance through communications, clinical services, outreach/education and more to ensure the community had trusted information and access to available personal protective equipment, testing and vaccinations.

Strategies for risk reduction and virus control included early case investigation and isolation, quarantine of close contacts, behavior modification like physical distancing and mask-wearing, testing and vaccination. Highlights of the response through June 30 are as follows:

- From July 1, 2023 to June 30, 2024, Fayette County saw approximately **5,035** lab-confirmed COVID-19 cases. This does not include self-administered at home testing. The first week of July 2023 we saw a low number of cases reported, at just 24 cases. From July 2023 through September 2023, we continued to see an increase in cases. KDPH called this the first "summer surge" for COVID-19 cases.
- Fayette County's highest number of cases was reported in September 2023, with **231** lab-confirmed cases reported the week of 9/2/23. Cases slowly decreased over the next several weeks. Fayette County saw another increase in cases in December 2023 with the highest week being 12/2/23 with 193 cases. Cases continued to decrease through the rest of the fiscal year.
- Between October 1, 2023, and June 30, 2024, public health nurses provided **235** COVID-19 vaccinations. These vaccinations were provided through a combination of 10 community clinics, homebound services, and through same day appointments in the Public Health Clinic.



COMMUNITY HEALTH ASSESSMENT

From July 1, 2023 to June 30, 2024, LFCHD made significant strides in pursuing new partnerships with community organizations to enhance the impact of the Community Health Assessment (CHA). After processing the data from the CHA, it was determined that the most meaningful area of focus for collective effort would be on mental and behavioral health. The department has continued to engage in meaningful conversations with community sectors about the needs in this area which has led to continued improvement in participation at quarterly LEX-CHIP meetings. This expanded effort is fueling a new partnership with the UK College of Public Health to expand the PhotoVoice project and to develop a strategic plan for the execution of the Community Health Improvement Plan (CHIP). Due to the successful integration of the PhotoVoice project into the CHA, LFCHD has been selected to present at the American Public Health Association (APHA) conference in October 2024.



SOCIAL MEDIA

LFCHD continued to serve as a primary source of Public Health information for Fayette County. From July 2023 to July 2024, the health department's social media increased significantly.



18,000 followers to
18,500+ followers



1,994 followers to
2,100+ followers



5,563 followers to
5,410 followers

FLU SHOTS and MPOX

During FY 24, LFCHD provided a total of **582** FLU shots through the Public Health Clinic and community clinics, and **26** Mpox immunizations (between July 2023 - June 2024). These were provided through same day appointments in the Public Health Clinic and community immunization events.



VACCINE PROMOTION

Through special federal funds for vaccine outreach, the Communications team brought the "Get Vaxxed, Y'all" campaign back to the community to encourage more people to get flu and COVID-19 shots. The campaign included outreach through billboards, bus ads, shopping carts, TV/radio ads and movie theater screens. It also featured direct outreach into community centers, shops, etc. with help from Community Education.



ENVIRONMENTAL HEALTH

Beginning in April 2024, Epidemiology received its first school related pertussis case since 2022. LFCHD worked with Fayette County Public Schools and other departments to quickly draft a letter to notify parents and staff of a potential exposure to pertussis and provided recommendations within the letter. LFCHD Epidemiology team and KDPH declared a Fayette County pertussis outbreak in May 2024. By June 30, 2024, Fayette County had 36 total pertussis cases and of those 36 cases, only 4 were not up to date on their vaccination. Prior to this outbreak, Fayette County only saw 16 total pertussis case from 2019-2024. This outbreak is ongoing.

In July 2023, LFCHD Epidemiology and Environmental Health Team conducted a joint investigation of a suspected legionella outbreak associated with an outside water source that is regulated by LFCHD. Epidemiology investigated 4 confirmed cases of diagnosed Legionnaires Disease that were all linked to a particular setting and water source. Environmental Health did an environmental assessment of the outdoor water source and collected specimens from the water sources including swabbing jets and collection of sand filter media. KDPH Lab Services had only recently been approved to test for Legionella and this was their first time. One specimen came back culture positive for Legionella. The water source was indefinitely closed voluntarily by the facility.

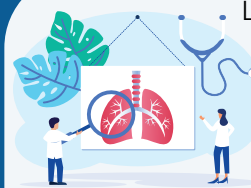


COMMUNITY HEALTH, EDUCATION & EQUITY

Community Health Equity and Education (CHEE) staff provided a wide array of health education and outreach in Fayette County during FY24. CHEE staff provided education and outreach at over 100 community events with over 80 unique community partners in FY24. CHEE diabetes education staff conducted four cohorts of the Diabetes Prevention Program with 52 participants, 3 cohorts of the Diabetes Self-Management Education program with 69 participants, and several diabetes educational workshops with 45 participants. CHEE tobacco education was provided at Fayette County Public Schools (FCPS) in partnership with LFCHD school health nurses. All FCPS sites received anti-vaping and tobacco prevention information, in addition CHEE tobacco staff provided anti-vaping workshops at 3 FCPS elementary, middle, and high schools. The CHEE Child Care Health Consultation (CCHC) staff provided over 100 hours of child care center training to 303 child care workers in numerous Fayette County child care centers.



TUBERCULOSIS



Lexington remains one of the primary resettlement cities for refugee and immigrant status individuals that are immigrating to Kentucky. Many of the new community members immigrate to Kentucky from countries where TB is endemic. Most of those countries are so burdened with TB disease treatment, they rarely have resources to provide their residents preventative care. We utilize Cyra-com and LanguageLine to enable translation to provide information and assure informed consent for our clients whose primary language is not English. We also began using Avochato to enable us to text clients in their preferred language. We welcome these and all community members and are happy to provide preventative treatment for those that have TB infection. Last year 253 community members were referred to the LFCHD TB Prevention & Control Program for surveillance of their TB infection. 54 have completed their preventative treatment. 44 continue medication into the new year, and will be completing it very soon. We provided treatment for TB disease diagnosed in 16 of our community members last year.

HARM REDUCTION

- In FY 2024, LFCHD's Harm Reduction Program served **1,671** unique participants, with a total of **12,734** visits (decrease of 21% from FY2023), received **615,641** syringes, distributed **685,740** sterile syringes, with a return rate for FY2024 of 89.78% (an increase of .75% from FY 2023). The program connected 131 individuals to treatment referrals for substance use disorder (decrease of 18.2%).



- In partnership with LFUCG, **3,807** free naloxone kits were distributed to participants at the Harm Reduction Program and to community members at 244 community events.

- Kits were funded through FR-CARA SAMHSA which is in year two of the 2nd four-year grant. In FY 2024, LFCHD received \$237,500 in funding to purchase **5,800** 2-dose kits of this life-saving medication. LFCHD also received a total of \$24,000 from the "Governor's Public Naloxone Storage Boxes Project" to purchase 400 boxes to be displayed as needed throughout Fayette County. LFCHD was initially awarded \$12,000 for 200 boxes at the beginning of FY24. Another \$12,000 was awarded near the end of FY24 after the success of getting the initial boxes distributed. Each box contains two, 2-dose kits of naloxone, naloxone instructions, and 2 CPR mask.

FACILITIES

Upon discovery of mold during the winter of FY 23, the health department put together a two-phase mold remediation plan. The first phase of the plan was completed in FY23 when both air handlers were professionally cleaned and air scrubbers were placed throughout the building. The second phase of the mold remediation plan commenced in FY24. After issuing a request for proposal (RFP), the health department selected a contractor and construction began in May. The work on the building will be completed by June 2025 and will include cleaning of all duct work, HVAC mechanical work, new ceilings and floors and additional deferred cosmetic updates. Operations will continue throughout the construction process.

WIC - Women, Infants and Children



The Women, Infants, and Children (WIC) program has operated under a hybrid model since August 2023. Certification appointments now require

patients come into the office to assess height, weight, and hemoglobin. Certain waivers are still in place, allowing patients to be seen remotely for appointments if barriers in transportation, household member illness, or a newborn infant are identified. All other types of appointments may be seen remotely under the new waiver. The WIC program saw a slight decrease in enrollment and participation in FY24 from **6,714** participants in July 2023 to **6,261** participants in June 2024.

The state WIC office selected Fayette County to participate in a farmers market pilot program. Fayette County received \$12,030 in farmers market funds to be distributed both in the office and offsite at the local Farmers' Markets. In June of 2024, the senior nutrition specialist/RD position was filled for the first time in almost a year. The WIC team looks forward to utilizing this position to help maintain the caseload and assist the nutrition services team leader.

H.A.N.D.S.

Health Access Nurturing Development Services (HANDS) has experienced steady growth over FY24 and has increased the number of families participating by 40%. In order to increase public awareness, HANDS completed a promotional video to showcase the program and provide an in-depth look at the attributes of

HANDS services. The video is 20 minutes in length



and features interviews with staff and families. In addition, four short 2-minute "reels" have been created using snippets of the video for social media promotion. The video and reels will be used extensively throughout FY25 and beyond. The HANDS program began work with community partner Family Care Center (FCC) to broker a direct connection between FCC and KDPH for contracting for HANDS services. FCC currently operates as a contractor of LFCHD, establishing a direct relationship between FCC and KDPH will improve efficiency for Fayette County HANDS service provision.

SCHOOL HEALTH

The Fayette County Public Schools (FCPS) contract was renewed effective July 1, 2024 - June 30, 2025. Since the renewal, two amendments were requested by FCPS and approved. The first amendment included utilizing 325 hours of the 1,000 summer school hours designated for summer ignite 2025, to provide health services for June 2024 summer ignite. The second amendment added Audrey Grevious Center to the contract, staffing the program with a part-time nurse and pulled nursing hours from three technical programs to cover the staffing cost. Neither of the amendments involved any monetary changes to the renewed contract. During the 2023-2024 school year, school nurses documented **66,139** health office visits, with **59,230** (89.6%) of the students being sent back to class, **6,857** (10.4%) were sent home, 52 of the students were sent to the hospital via EMS. The school nurses completed **1,230** dental screenings, applying fluoride varnish application to 1,230 elementary students, with **203** students requiring dental referrals.

